

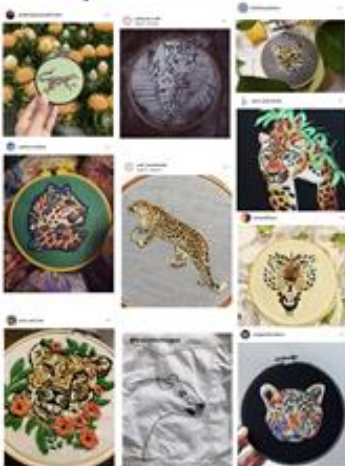
april news letter 2020

Rabbit hat
designs 
www.rabbithatdesigns.com

Welcome to Rabbit Hat Designs April news! I hope everyone's hanging in out there! I know it's trying times for many with the virus and social isolation, sending out get well and keep well wishes to you all. I'm excited to announce a new DIY kit release, the Tiger Moth and moon kit! I have designed this kit on yellow fabric to look like the moon. These have been super popular and are currently sold out, but I promise to restock soon! With this kit release I thought I'd write a little about my love of moths and transverse orientation, the way moths navigate in relation to the moon after some quick updates.



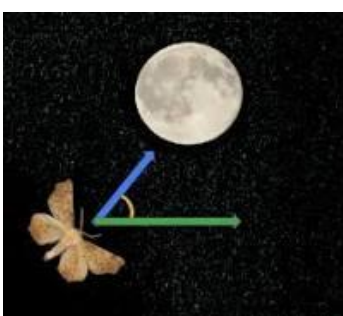
updates



We are now on the fourth month of the stitch an endangered animal a month challenge! Amur leopard month was full of such beautiful work, to find all the original hoops and stitchers follow the links on the image to the left on my instagram feed. I've been absolutely loving seeing everyone's stitch animals come to life. Thanks so much to everyone taking part, sharing your beautiful work and animal facts. This month is all about the plains bison. There were once millions of these awesome creatures across the US whereas now there are only a few hundred in the US wild. Bison help to aerate soil and spread wildflower seeds meaning they are a huge part of maintaining a flourishing ecosystem. WWF are working to increase their numbers. To find out more about the endangered animal stitching challenge and how to join in you can find more info on my website www.rabbithatdesigns.com under 2020 challenges. I'll be sharing all bison stitches on the 30th April!

all about moths and transverse orientation

Moths are one of my favorite animals. They are often overlooked but there are so many awesome species of moth out there. Moths are often thought to be more camouflaged, tending to be seen as more brown, grey or green in color but there are actually thousands of different varieties of moth and many are brightly colored with intricate patterns. I often stitch single moths celebrating some of my favorite moths and I also amplify moth wings in macro nature embroidery hoops. At times it is easy not notice the smallest creatures and the beautiful patterns that can be



seen when we zoom in. I love thinking of my macro nature embroideries as holding up a magnifying glass to moth patterns that are so layered and intricate, which are often invisible to the naked eye. Moths use transverse orientation, a navigation system using the moon by flying at a consistent angle to its light. I love the symbolism of a constant beaming beacon to move in relation to. My fascination with moths started with an art piece I made called Moth Light for a group art exhibition with my London based art collective, Winnicott Wednesdays.



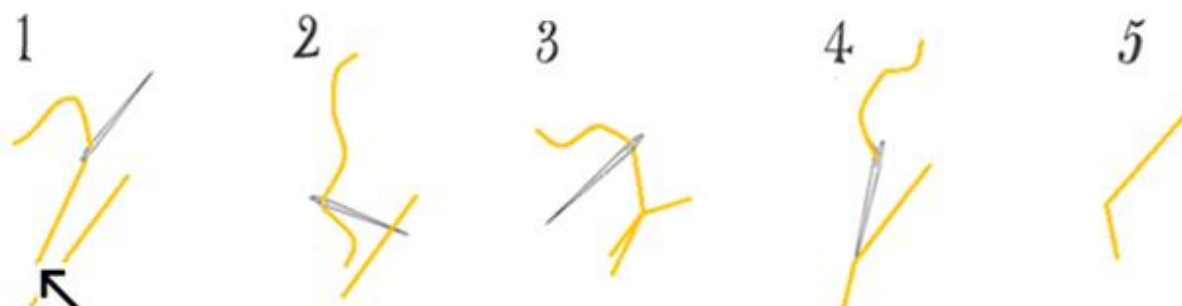
[https://www.researchgate.net/figure/](https://www.researchgate.net/figure/Transverse-orientation-method_fig4_332138212)

[Transverse-orientation-method_fig4_332138212](https://www.researchgate.net/figure/Transverse-orientation-method_fig4_332138212)

The theme of the exhibition was 'A void' where we were exploring ideas around distractions as a means of avoiding a feeling or difficult experience, find more info about the work and exhibition at www.winnicottwednesdays.weebly.com. I thought about moths butting their heads against light bulbs and how sometimes we may think we are heading towards what we need, but it doesn't actually meet the need. While I was working on this I drew several moths and started to explore all the different moth varieties out there. Moths were the first things I started stitching in hoops, with a series of moth photos I found and my love of moths kept growing. From there I've discovered all sorts of awesome moths!

how to fix or change stitches

There are times where stitches go awry, sometimes you notice them after you've finished your embroidery or sometimes it's while you're stitching. The stitching trick in this how to can be especially handy for curved angles, when you want a continuous long curved line stitch as well. I used this adjustment stitch a lot when I started out, often finding it difficult to get the look I wanted with my first stitches. I use this stitch now on my larger macro nature embroideries as a means of angling or anchoring the longer stitches. For these stitches you will need thinner thread. To make this rub one end of your thread (using 6 strand thread) between your fingers until it separates into 6 strands, pull 3 strands away from the rest and use these to stitch with.



Find the spot where you want to adjust your original stitch to, then run your needle and thread through your fabric from underneath your embroidery at that point.

Use your needle to catch the thread of the stitch you want to change by threading your needle under it.

Gently but firmly pull the stitch over to the point where you came up through your fabric as you get ready to return back down through your fabric.

Then return your needle and thread through the point where you came up to bend the stitch to its new position.

Remember to use the same color thread as the stitch that you are changing!

out and about

Here's where I share listens, reads and things that inspire me. I have been loving some of the listens from this month, so in case you missed them on my instagram, here's a list of awesome listens to check out... The Last Sound by Invisibilia, Radio 4's programme 'Lights Out' is full of beautiful nuggets of stories and soundscapes, I especially loved Deep Time and the Sparrow Hawk and

BBC
RADIO



★ coupon ★

This month get 30% of botanic embroideries!

Use the code NEWSRABBIT on my Etsy shop

Speaking Sabar. A new album I've been loving is Fiona's Apple's Fetch the Bolt Cutters. Hope you are keeping healthy and happy in these strange times! Thanks for reading!